

MONTHLY MEMBERSHIP PROGRESS REPORT

LOCATION ALASKA

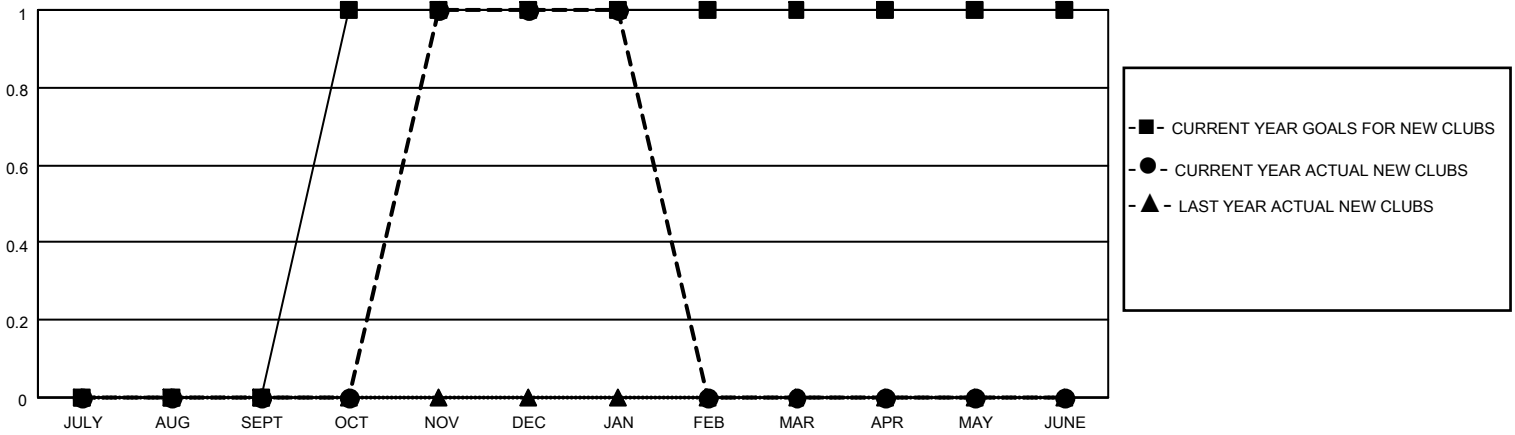
District 49 A

Results as of: 1/31/2022

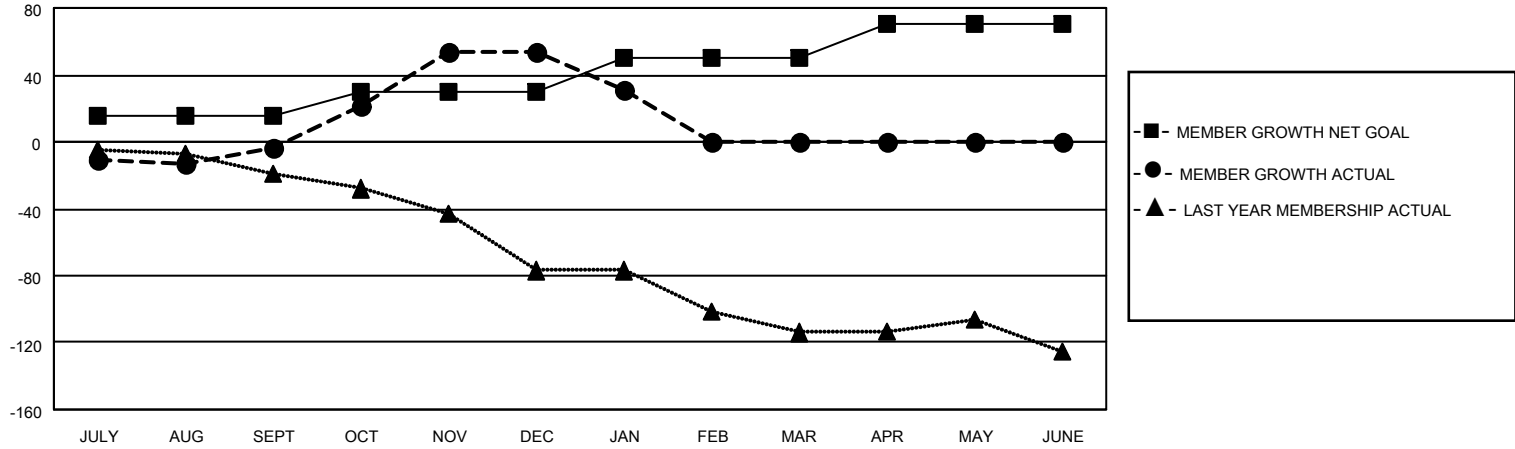
Clubs			
RESULTS FOR 2021-2022			
QUARTER	NEW CLUB GOAL	NEW CLUBS	DROPPED CLUBS
JULY/AUG/SEPT	0	0	1
OCT/NOV/DEC	1	1	0
JAN/FEB/MAR	0	0	0
APR/MAY/JUNE	0	0	0

Members			
RESULTS FOR 2021-2022			
QUARTER	MEMBER GROWTH NET GOAL	MEMBER GROWTH ACTUAL	DROPPED MEMBERS ACTUAL (including transfers)
JULY/AUG/SEPT	15	59	47
OCT/NOV/DEC	15	90	29
JAN/FEB/MAR	20	17	39
APR/MAY/JUNE	20	0	0

GOALS AND ACTUAL NEW CLUBS CUMULATIVE



GOALS AND ACTUAL MEMBERS CUMULATIVE



DROPPED CLUBS: 1

15 CLUBS OF 34 ADDED 1 OR MORE NEW MEMBERS

GENDER DISTRIBUTION

MALE	652 (56.40%)
FEMALE	504 (43.60%)
NON BINARY	0 (0.00%)
PREFER NOT TO ANSWER	0 (0.00%)

DROPPED MEMBERS

[CLICK HERE FOR CUMULATIVE MEMBERSHIP DATA](#)

DECEASED	10
CLUB CANCELLED	0
OTHER	105
TOTAL	115

TOTAL FAMILY UNIT MEMBERS 249

FAMILY MEMBERS PAYING HALF DUES 130